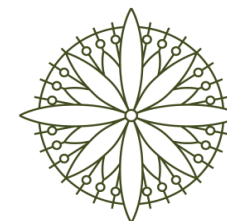
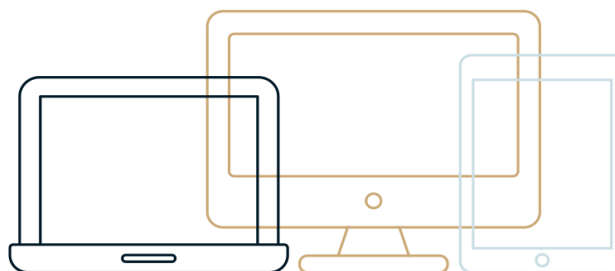


SCHEDULE OF ONLINE SUBJECTS 2020

Higher Education



ENDEAVOUR
College of
Natural Health

Endeavour College recognises it isn't always possible to make it to campus when trying to balance work and personal commitments. Endeavour College offers students who cannot, or prefer not to attend sessions on campus, the ability to study some subjects online.

Endeavour College delivers these subjects over the internet using a variety of presentations and communication tools.

Weekly lectures are narrated, recorded and presented online. Students can choose to download class notes, podcasts or even iPod versions of lectures. Students have the choice of participating in discussions through forums, blogs and wikis.

Staff and students enrolled in online subjects can communicate through instant messaging, Skype and virtual classrooms.

Assignments are able to be submitted electronically and posted back to the student through an online learning environment. Some subjects make use of virtual labs which provide realistic simulations using rich multimedia.

Students undertaking online subjects are supported with one dedicated online tutor for each subject to help support their learning through to graduation.

SUBJECTS	SUBJECT CODE	6 JAN	3 FEB	2 MAR	6 APR	4 MAY	1 JUN	6 JUL	3 AUG	7 SEP	5 OCT	2 NOV	7 DEC
Introduction to Academic Skills	ACAS011		✓			✓			✓		✓		
Chemistry and Biochemistry	BIOB111		✓	✓		✓		✓	✓		✓		✓
Pathology and Clinical Science 1	BIOC211		✓	✓			✓		✓		✓		✓
Introduction to Health Sciences	BIOH011				✓			✓		✓			
Human Biological Science 1	BIOH111	✓		✓	✓		✓	✓	✓		✓	✓	
Human Biological Science 2	BIOH122		✓	✓			✓		✓	✓		✓	
Biochemistry for Complementary Therapists	BIOO211			✓					✓				
Pharmacology	BIOP211		✓	✓			✓	✓	✓		✓		✓
Pathology and Clinical Science 2 and 3	BIOS222			✓			✓	✓	✓	✓		✓	
Wellness Practices	BIOW311		✓					✓			✓		
Introduction to Chinese Medicine	CMPF121			✓		✓			✓		✓		
Introduction to Chinese Medicine 2	CMPF122			✓					✓		✓		

Chinese Medical Clinical Diagnosis	CMPF123								✓		✓		
TCM Terminology in Chinese	CMPR112			✓					✓		✓		
TCM Assessment and Differentiation	CMPR121			✓					✓		✓		
Introduction to Complementary Medicine Clinical Practice	HMCL221			✓					✓				
Introduction to Homeopathy	HOMC111		✓	✓	✓		✓		✓		✓		
Homeopathic Acute Prescribing	HOMC121		✓	✓			✓		✓				
Comparative Materia Medica	HOMM122			✓			✓		✓		✓		
Homeopathic Case Taking	HOMT122			✓			✓		✓		✓		
Nutrition, Exercise and Lifestyle	MSTN211								✓				
Introduction to Musculoskeletal Therapies	MSTP211			✓					✓		✓		
History and Philosophy of Natural Medicine	NATE121	✓		✓		✓			✓		✓		
Flower Essence Therapy	NATF311			✓		✓			✓		✓		✓
Naturopathic Hydrotherapy	NATH421	✓		✓					✓				
Neuroendochronology and Fatigue Management	NATN422				✓								
Naturopathic Philosophy	NATP111		✓	✓			✓		✓		✓		

More subjects available on the next page >

SUBJECTS	SUBJECT CODE	6 JAN	3 FEB	2 MAR	6 APR	4 MAY	1 JUN	6 JUL	3 AUG	7 SEP	5 OCT	2 NOV	7 DEC
Naturopathic Philosophy, Principles and Practice	NATP121			✓			✓		✓	✓			✓
Foundations of Human Nutrition	NMDF121	✓		✓	✓		✓		✓		✓		✓
Medicinal Food Science	NMDM121		✓	✓			✓		✓		✓	✓	
Sociology of Food	NMDS111		✓	✓	✓		✓	✓	✓	✓		✓	
Sociology of Food for Complementary Medicine	NMDS122			✓			✓				✓		
Evidence Based Approaches in Complementary Medicine	SOCA321			✓					✓		✓		
Behavioural Change and Health Promotion	SOCB311			✓					✓		✓		
Establish and Manage a Practice	SOCE311	✓		✓		✓		✓		✓		✓	
Foundations of Communication and Counselling	SOCF111		✓	✓	✓	✓	✓		✓		✓	✓	
Foundations of Public Health for Complementary Medicine	SOCF311			✓					✓		✓		
History of Healing	SOCH111	✓	✓	✓	✓	✓	✓	✓	✓	✓	✓	✓	✓
Foundations of Public Health	SOCH311			✓			✓			✓		✓	
Ethics and Law in Complementary Medicine	SOCL321			✓					✓		✓		
Mindfulness in Practice	SOCM311				✓					✓			
Foundations of Critical Enquiry	SOCQ121		✓	✓		✓	✓	✓	✓			✓	✓
Sociology for Complementary Medicine	SOCS221			✓					✓		✓		
Herbal Botany	WHMF123			✓					✓		✓		
Herbal Therapeutic Preparation	WHMF124			✓					✓		✓		

Honours Program

SUBJECTS	SUBJECT CODE	6 JAN	3 FEB	2 MAR	6 APR	4 MAY	1 JUN	6 JUL	3 AUG	7 SEP	5 OCT	2 NOV	7 DEC
Research Proposal and Ethics	RESE511		✓						✓				
Research Methodology	RESM511		✓						✓				
Research Project	RESP521		✓						✓				

Advanced Academic Writing

RESW511



endeavour.edu.au  **1300 462 887**

ADELAIDE • BRISBANE • GOLD COAST • MELBOURNE • PERTH • SYDNEY

V5.0



Last modified: 19-02-2020